



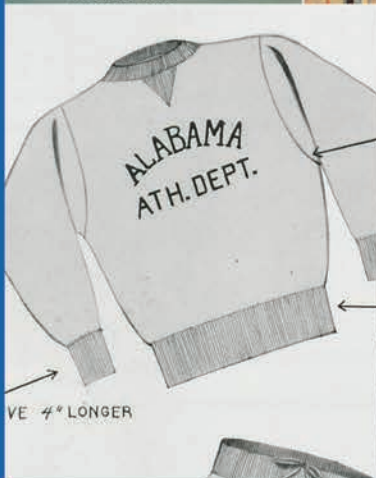
**R**  
**RUSSELL**  
**ATHLETIC.**



...TAKE IT FROM THE PROS!



## TEAM SPECIALIST CATALOG 1984



**AS INVENTORS OF THE SWEATSHIRT™  
RUSSELL ATHLETIC HAS BEEN COMMITTED TO  
DELIVERING HIGH QUALITY APPAREL FOR OVER  
90 YEARS.**

**DURING THAT TIME, OUR EAGLE LOGO  
HAS BEEN AN ICONIC PART OF OUR HISTORY.  
IT EMBODIES THE VALUES THAT HAVE MADE US ONE  
OF AMERICA'S MOST BELOVED BRANDS, BOTH ON  
AND OFF THE FIELD OF PLAY.**

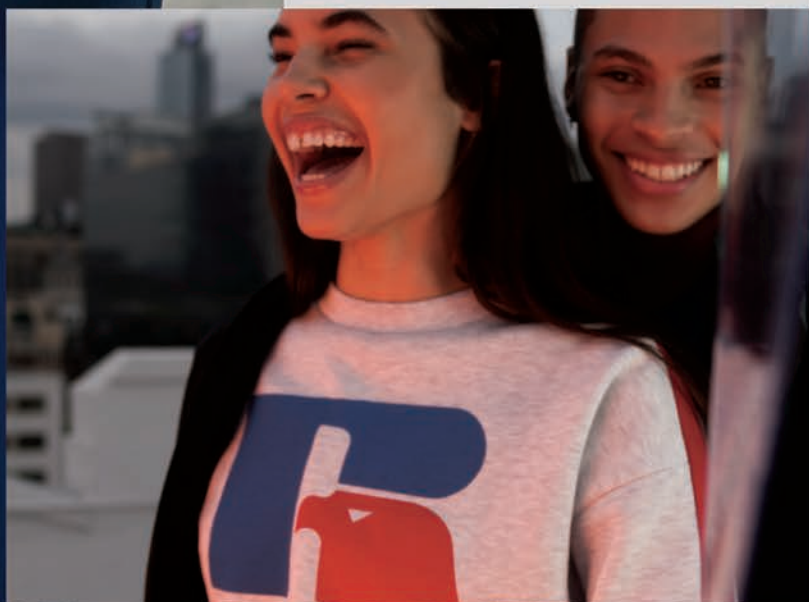
**TODAY IS NO DIFFERENT. WE REMAIN COMMITTED  
TO OUR ORIGINAL VALUES OF INNOVATION AND  
CRAFTSMANSHIP FOR EVERYONE WHO LIVES  
AND EMBRACES THE NEW ATHLETIC LIFE.**







**WELCOME TO THE  
ATHLETIC LIFE**







# NEW IN 2020

## INTRODUCING THE COTTON CLASSICS COLLECTION

Staying true to our heritage, the all-new Cotton Classics Collection is made with comfort in mind – with a super soft hand, a relaxed fit and timeless construction details, it's the ideal choice for sideline and spiritwear apparel.



## COTTON CLASSICS

### 08 **NEW COTTON CLASSICS FLEECE**

83% Ring-Spun Cotton/17% Polyester Pre-shrunk Fleece  
8.5 oz | 288 g

- 08 Cotton Classic Fleece Hoodie
- 10 Cotton Classic Fleece Sweatshirt
- 11 Cotton Classic Fleece Open-Bottom Pant

### 12 **NEW COTTON CLASSICS JERSEY**

100% Combed Ring-Spun Cotton  
6.0 oz | 203 g

- 12 Cotton Classic T-Shirt
- 13 Cotton Classic Long-Sleeve T-Shirt

## PERFORMANCE

### 16 **DRI-POWER® CORE PERFORMANCE POLYESTER**

100% Polyester Interlock  
4.1 oz | 139 g

- 18 Dri-Power® Core Performance T-Shirt
- 20 Dri-Power® Core Performance Youth T-Shirt
- 21 Dri-Power® Core Performance Youth Pocketed Short
- 23 Dri-Power® Core Performance Long-Sleeve T-Shirt
- 24 Dri-Power® Core Performance Pocketed Short

### 26 **DRI-POWER® POLYESTER MESH SHORTS**

100% Polyester Tricot Mesh  
2.8 oz | 95 g

- 28 Dri-Power® Tricot Mesh Short
- 29 Dri-Power® Youth Tricot Mesh Short
- 31 Dri-Power® Tricot Mesh Pocketed Short

### 32 **DRI-POWER® POLYESTER SPORT SHIRTS**

100% Polyester  
4.0 oz | 136 g

- 34 Dri-Power® Sport Shirt
- 35 Dri-Power® Ladies' Sport Shirt

### 36 **DRI-POWER® POLYESTER QUARTER-ZIP PULLOVERS**

100% Polyester Two-Tone Interlock  
5.4 oz | 183 g

- 38 Dri-Power® Quarter-Zip Pullover
- 39 Dri-Power® Ladies' Quarter-Zip Pullover

### 40 **DRI-POWER® FLEECE**

50/50 Cotton/Polyester Pre-shrunk Fleece  
9.3 oz | 315 g

- 42 Dri-Power® Color-Block Hooded Sweatshirt
- 43 Dri-Power® Full-Zip Hooded Sweatshirt
- 44 Dri-Power® Hooded Sweatshirt
- 45 Dri-Power® Youth Hooded Sweatshirt
- 46 Dri-Power® Sweatshirt
- 47 Dri-Power® Youth Sweatshirt
- 48 Dri-Power® Quarter-Zip Cadet Collar Sweatshirt
- 49 Dri-Power® Pocketed Closed-Bottom Sweatpant
- 50 Dri-Power® Sweatpant
- 52 Dri-Power® Pocketed Open-Bottom Sweatpant
- 53 Dri-Power® Youth Pocketed Open-Bottom Sweatpant
- 55 Dri-Power® Pocketed Short

### 56 **LADIES' FLEECE**

60/40 Cotton/Polyester Fleece  
7.6 oz | 258 g

- 57 Ladies' Hooded Sweatshirt
- 58 Ladies' Sweatshirt
- 59 Ladies' Sweatpant

### 60 **ESSENTIAL JERSEY**

60/40 Cotton/Polyester Pre-shrunk Jersey  
4.75 oz | 160 g

- 63 Essential Ringer T-Shirt
- 65 Essential T-Shirt
- 66 Essential Ladies' T-Shirt
- 68 Essential Youth T-Shirt
- 69 Essential Long-Sleeve T-Shirt
- 70 Essential Ladies' Long-Sleeve T-Shirt
- 71 Essential Tank
- 72 Essential Ladies' Tank
- 75 Essential Muscle T-Shirt
- 77 Essential Pullover Hood
- 78 Essential Ladies' Full-Zip Hood
- 79 Essential Ladies' Jogger
- 80 Essential Ladies' Short
- 81 Cotton Pocketed Short

### 83 **FIT GUIDE**

Find the Perfect Fit for Your Style

### 84 **CORPORATE SOCIAL RESPONSIBILITY**

Our commitment to our Environment, Community and Customers



**NEW**

# COTTON CLASSICS

Built for those who appreciate timeless sportswear, our Cotton Classics Collection features heavyweight cotton construction, simplistic details, and a relaxed fit, while maintaining the durability that you expect. With a variety of fleece and jersey styles to choose from, you'll find that the Cotton Classics Collection is all you need to create the style you've been looking for.

Russell Athletic is known for cotton, durability, and quality since 1902.



**SOFT FABRIC**

Brushed for increased  
warmth and comfort







# 820NSM0

## NEW COTTON CLASSIC FLEECE HOODIE

8.5 oz | 288 g

83% Ring-Spun Cotton / 17% Polyester Pre-shrunk Fleece

- Three-end fleece with ring-spun cotton face
- V-notch detail at front neck with medium grey heather coverseam tape
- Three-panel hood with medium grey heather hood lining and tipped drawcord
- Rib knit cuffs and waistband
- Front pouch pocket
- Double-needle topstitching at neck, armhole, cuffs and waistband
- "Eagle R" logo embroidered patch at bottom hem
- 7 colors

Adult: S - 3XL

### Fabric Variations:

Ash — 81% Ring-Spun Cotton / 19% Polyester

Medium Grey Heather — 74% Ring-Spun Cotton / 26% Polyester

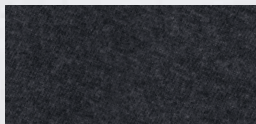
Charcoal Heather — 66% Ring-Spun Cotton / 34% Polyester



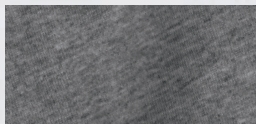
ASH



BLACK



CHARCOAL HEATHER



MEDIUM GREY  
HEATHER



NAVY



ROYAL



TRUE RED





---

### THREE-END FLEECE

provides durability  
and softness



# 82RNSM0

## NEW COTTON CLASSIC FLEECE SWEATSHIRT

8.5 oz | 288 g

83% Ring-Spun Cotton / 17% Polyester Pre-shrunk Fleece

- Three-end fleece with ring-spun cotton face
- V-notch detail at front neck with medium grey heather coverseam tape
- Rib knit collar, cuffs and waistband
- Double-needle topstitching at neck, armhole, cuffs and waistband
- "Eagle R" logo embroidered patch at bottom hem
- 7 colors

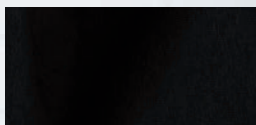
Adult: S - 3XL

### Fabric Variations:

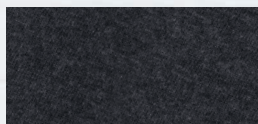
Ash — 81% Ring-Spun Cotton / 19% Polyester  
Medium Grey Heather — 74% Ring-Spun Cotton / 26% Polyester  
Charcoal Heather — 66% Ring-Spun Cotton / 34% Polyester



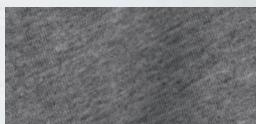
ASH



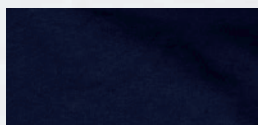
BLACK



CHARCOAL HEATHER



MEDIUM GREY  
HEATHER



NAVY



ROYAL



TRUE RED





## 82ANSM0

**NEW COTTON CLASSIC  
FLEECE OPEN-BOTTOM PANT**

8.5 oz | 288 g  
 83% Ring-Spun Cotton /  
 17% Polyester Pre-shrunk Fleece

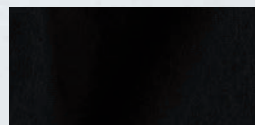
- Three-end fleece with ring-spun cotton face
- Side-entry pockets
- Elastic waistband with internal split drawcord
- Graded inseams
- Topstitching at rise
- "Eagle R" logo embroidered patch at right hip
- 4 colors

Adult: S - 3XL

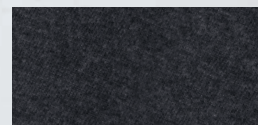
**Fabric Variations:**

Medium Grey Heather — 74% Ring-Spun Cotton /  
 26% Polyester

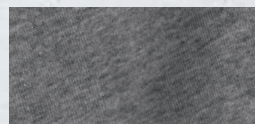
Charcoal Heather — 66% Ring-Spun Cotton /  
 34% Polyester



BLACK



CHARCOAL HEATHER

MEDIUM GREY  
HEATHER

NAVY



# 600MRUS

## NEW COTTON CLASSIC T-SHIRT

6.0 oz | 203 g

100% Combed Ring-Spun Cotton

- Combed ring-spun cotton with superior softness
- Classic fit with shaped armholes
- Tagless Russell Athletic neck label
- Seamless 1x1 rib collar
- Shoulder-to-shoulder taping
- Double-needle hemmed sleeves and bottom
- "Eagle R" logo at left sleeve hem
- 7 colors

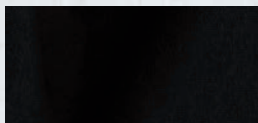
Adult: S - 3XL

### Fabric Variation:

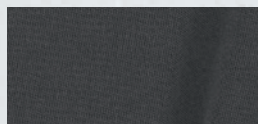
Athletic Heather — 90% Carded Ring-Spun Cotton /  
10% Polyester



ATHLETIC HEATHER



BLACK INK



CHARCOAL GREY



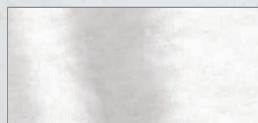
NAVY



ROYAL



TRUE RED



WHITE





## 600LRUS

**NEW COTTON CLASSIC  
LONG-SLEEVE T-SHIRT**

6.0 oz | 203 g  
100% Combed Ring-Spun Cotton

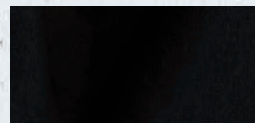
- Combed ring-spun cotton with superior softness
- Classic fit with shaped armholes
- Tagless Russell Athletic neck label
- Seamless 1x1 rib collar, rib cuffs
- Shoulder-to-shoulder taping
- Double-needle hemmed bottom
- "Eagle R" logo on lower left sleeve
- 7 colors

Adult: S–3XL

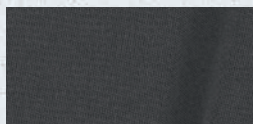
**Fabric Variation:**  
Athletic Heather — 90% Carded Ring-Spun Cotton /  
10% Polyester



ATHLETIC HEATHER



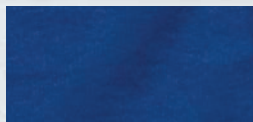
BLACK INK



CHARCOAL GREY



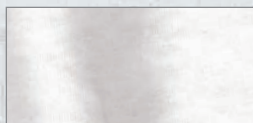
NAVY



ROYAL



TRUE RED



WHITE







# PERFORMANCE

Russell Athletic was born on the playing fields over 120 years ago, sport is who we are. Whatever your sport, let our performance collection help you perform your best. All designed with our signature moisture wicking technology that helps to keep you dry, comfortable, and performing at your best. Our performance collection, with a mix of technology benefits, has a variety of styles, colors, and sizes to fit every lifestyle.







## DRI-POWER® CORE PERFORMANCE POLYESTER

Made with lightweight polyester interlock, this collection is the workhorse of workout styles. With Dri-Power® moisture wicking and odor protection, the shirts and shorts in this offering will maintain maximum comfort, whether on the field, sideline or in the gym. With styles available in adult and youth sizes, they're ideal for outdoor leagues, runs, school teams and more.



**DRI-POWER®**  
Keeps you dry & cool



**ODOR PROTECTION**  
Helps keep fabric fresh  
from odors





# 629X2M1

## DRI-POWER® CORE PERFORMANCE T-SHIRT

4.1 oz | 139 g  
100% Polyester Interlock

- Dri-Power® moisture wicking
- Odor protection
- Self-material collar
- Contrast back neck tape
- Tagless label
- Russell Athletic logo on lower left sleeve
- 13 colors

Adult: S – 4XL



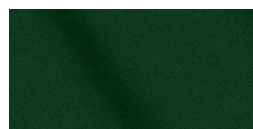
BLACK



BURNT ORANGE



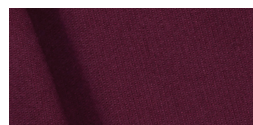
CARDINAL



DARK GREEN



GOLD



MAROON



NAVY



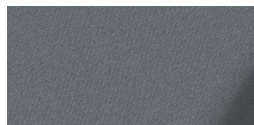
PURPLE



ROYAL



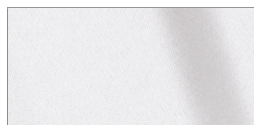
STEALTH



STEEL



TRUE RED



WHITE



## DUAL PERFORMANCE

with moisture wicking and odor  
protection benefits

629X2M1





# 629X2B1

## DRI-POWER® CORE PERFORMANCE YOUTH T-SHIRT

4.1 oz | 139 g  
100% Polyester Interlock

- Dri-Power® moisture wicking
- Odor protection
- Self-material collar
- Contrast back neck tape
- Tagless label
- Russell Athletic logo on lower left sleeve
- CPSIA compliant: Russell Athletic® youth products and packaging comply with the tracking label requirements of the Consumer Product Safety Improvement Act
- 10 colors

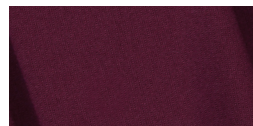
Youth: S – XL



BLACK



CARDINAL



MAROON



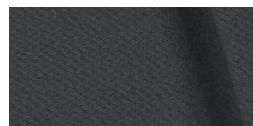
NAVY



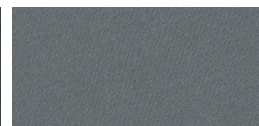
PURPLE



ROYAL



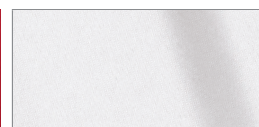
STEALTH



STEEL



TRUE RED



WHITE





## TS7X2B0

### DRI-POWER® CORE PERFORMANCE YOUTH POCKETED SHORT

4.1 oz | 139 g  
100% Polyester Interlock

- Dri-Power® moisture wicking
- Odor protection
- Side-entry pockets
- Covered elastic waistband with internal drawcord
- 7" inseam
- Russell Athletic logo at lower right leg
- 8 colors

Youth: S - XL



BLACK



CARDINAL



MAROON



NAVY



ROCK



ROYAL



STEALTH



TRUE RED





631X2M1

TS7X2M0

---

## VERSATILE POLY INTERLOCK

great for all levels of working out



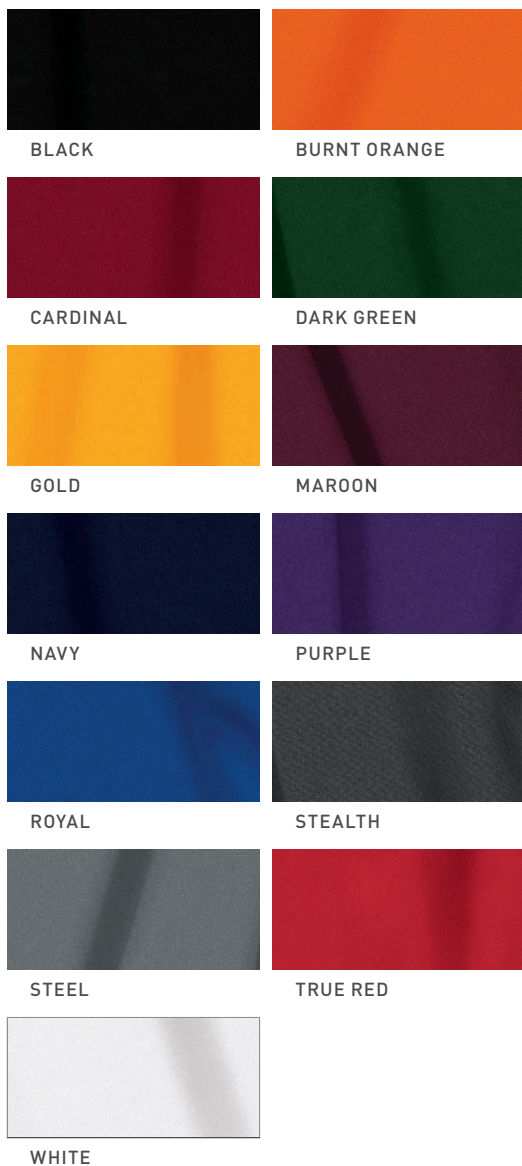
## 631X2M1

**DRI-POWER® CORE PERFORMANCE  
LONG-SLEEVE T-SHIRT**

4.1 oz | 139 g  
100% Polyester Interlock

- Dri-Power® moisture wicking
- Odor protection
- Self-material collar
- Contrast back neck tape
- Tagless label
- Russell Athletic logo on lower left sleeve
- 13 colors

Adult: S - 4XL







## TS7X2M0

### DRI-POWER® CORE PERFORMANCE POCKETED SHORT

4.1 oz | 139 g  
100% Polyester Interlock

- Dri-Power® moisture wicking
- Odor protection
- Side-entry pockets
- Covered elastic waistband with internal drawcord
- 10" inseam
- Russell Athletic logo at lower right leg
- 10 colors

Adult: S – 3XL



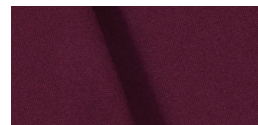
BLACK



CARDINAL



DARK GREEN



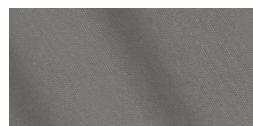
MAROON



NAVY



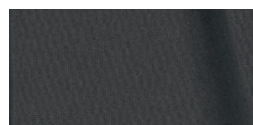
PURPLE



ROCK



ROYAL



STEALTH



TRUE RED





629X2M1

TS7X2M0

**COMFORTABLE FIT**  
with a 10" inseam







## DRI-POWER® POLYESTER MESH SHORTS

The shorts in this collection feature cool, breathable mesh fabric with an inside drawcord for an adjustable fit. Featuring Dri-Power® moisture-wicking technology to maintain dryness and long-lasting comfort, these shorts are a workout-wardrobe staple. Offered in a variety of colors in adult and youth styles, they're ideal for outdoor leagues and school teams.



**DRI-POWER®**  
Keeps you dry & cool





## 659AFMK

### DRI-POWER® TRICOT MESH SHORT

2.8 oz | 95 g  
100% Polyester Tricot Mesh

- Dri-Power® moisture wicking
- Elastic waistband with internal drawcord
- 9" inseam
- Russell Athletic logo on lower right hem
- 12 colors

Adult: S - 4XL



BLACK



BURNT ORANGE



CARDINAL



DARK GREEN



GOLD



GRIDIRON SILVER



MAROON



NAVY



PURPLE



ROYAL



TRUE RED



WHITE





## 659AFB0

### DRI-POWER® YOUTH TRICOT MESH SHORT

2.8 oz | 95 g  
100% Polyester Tricot Mesh

- Dri-Power® moisture wicking
- Elastic waistband with internal drawcord
- 7" inseam
- Russell Athletic logo on lower right hem
- CPSIA compliant: Russell Athletic® youth products and packaging comply with the tracking label requirements of the Consumer Product Safety Improvement Act
- 10 colors

Youth: S - XL



BLACK



BURNT ORANGE



CARDINAL



DARK GREEN



GRIDIRON SILVER



MAROON



NAVY



PURPLE



ROYAL



TRUE RED

A full-page photograph of a man with short dark hair, wearing a blue short-sleeved athletic shirt, black mesh shorts, and white sneakers. He is sitting on white bleachers, leaning back on his right arm which is resting on the bleacher rail. He is looking towards the camera. The background shows a blurred cityscape with a tall building under a clear blue sky.

## LONG-LASTING COMFORT

from mesh fabrication and  
Dri-Power® technology

629X2M1

651AFM1





## 651AFM1

### DRI-POWER® TRICOT MESH POCKETED SHORT

2.8 oz | 95 g  
100% Polyester Tricot Mesh

- Dri-Power® moisture wicking
- Covered elastic waistband with internal drawcord
- Side-entry pockets
- 9" inseam
- Russell Athletic logo at lower right leg
- 10 colors

Adult: S – 3XL



BLACK



BURNT ORANGE



DARK GREEN



MAROON



NAVY



ROYAL



STEALTH



STEEL



TRUE RED



WHITE





## DRI-POWER® POLYESTER SPORT SHIRTS

These versatile sport shirts can easily transition from the office to the fairway. Featuring moisture-wicking technology, UPF 30+ and odor-protection properties, they provide all-day comfort at an incredible value. Offered in men's and ladies' sizes, in multiple athletic colors, they're a great choice for casual-performance apparel programs.



**DRI-POWER®**  
Keeps you dry & cool



**ODOR PROTECTION**  
Helps keep fabric fresh  
from odors



**UPF 30+**  
Protection from  
harmful rays



## 7EPTUM0

### DRI-POWER® SPORT SHIRT

4.0 oz | 136 g  
100% Polyester

- Dri-Power® moisture wicking
- Odor protection
- UPF 30+ protection
- Clean finished placket with branded buttons for modern styling
- Rib collar
- Tagless label
- Russell Athletic logo on lower left hem
- Companion to style 7EPTUX0
- 11 colors

Adult: S - 4XL



BLACK



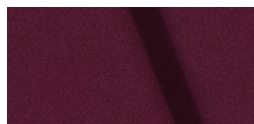
CARDINAL



COLLEGIATE BLUE



DARK GREEN



MAROON



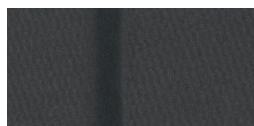
NAVY



PURPLE



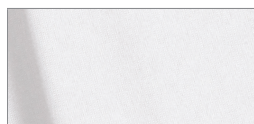
ROYAL



STEALTH



TRUE RED



WHITE



# 7EPTUX0

## DRI-POWER® LADIES' SPORT SHIRT

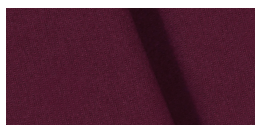
4.0 oz | 136 g  
100% Polyester

- Dri-Power® moisture wicking
- Odor protection
- UPF 30+ protection
- Clean finished placket with branded buttons for modern styling
- Tagless label
- Russell Athletic logo on lower left hem
- Companion to style 7EPTUM0
- 7 colors

Ladies': S - 2XL



BLACK



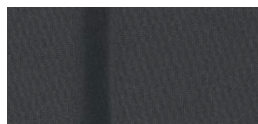
MAROON



NAVY



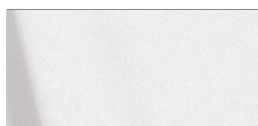
ROYAL



STEALTH



TRUE RED



WHITE

### TRIPLE-ACTION BENEFITS

for long-lasting comfort









## DRI-POWER® POLYESTER QUARTER-ZIP PULLOVERS

Lightweight and the perfect layering piece, the Russell Athletic quarter-zips feature our Dri-Power® moisture-wicking technology and odor-protection benefits to ensure that you stay cool, dry and confident. Offered in men's and ladies' sizes, this piece can take you from the boardroom to the gym—making it ideal for corporate apparel programs or fan wear alike.



**DRI-POWER®**  
Keeps you dry & cool



**ODOR PROTECTION**  
Helps keep fabric fresh  
from odors



**LIGHTWEIGHT**  
Provides a light,  
comfortable feel



**STRETCH**  
Provides comfort  
& full mobility



## QZ7EAM0

### DRI-POWER® QUARTER-ZIP PULLOVER

5.4 oz | 183 g

100% Polyester Two-Tone Interlock

- Dri-Power® moisture wicking
- Odor protection
- Lightweight stretch fabric provides freedom of movement and helps to enhance performance
- Tagless label
- Russell Athletic logo on lower left sleeve
- Companion to style QZ7EAX0
- 9 colors

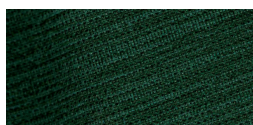
Adult: S-3XL



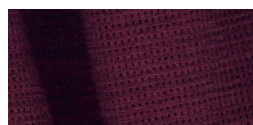
BLACK



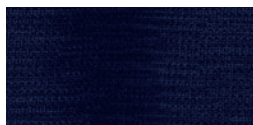
CARDINAL



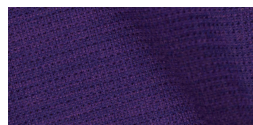
DARK GREEN



MAROON



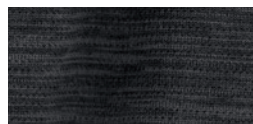
NAVY



PURPLE



ROYAL



STEALTH



TRUE RED



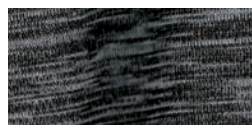
# QZ7EAX0

## DRI-POWER® LADIES' QUARTER-ZIP PULLOVER

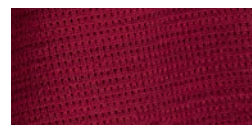
5.4 oz | 183 g  
100% Polyester Two-Tone Interlock

- Dri-Power® moisture wicking
- Odor protection
- Lightweight stretch fabric provides freedom of movement and helps to enhance performance
- Tagless label
- Russell Athletic logo on lower left sleeve
- Companion to style QZ7EAM0
- 9 colors

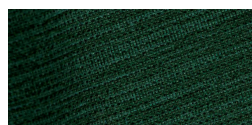
Ladies': S - 2XL



BLACK



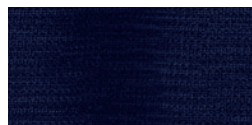
CARDINAL



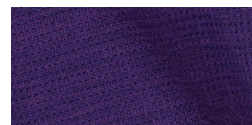
DARK GREEN



MAROON



NAVY



PURPLE



ROYAL



STEALTH



TRUE RED

### VERSATILE STYLING

transitions from casual to performance wear; great for corporate apparel programs, too





## DRI-POWER® FLEECE

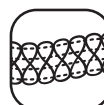
For over 90 years Russell Athletic has delivered on making quality fleece products. In fact, we invented the sweatshirt in 1926, and are still producing superior styles today. Our Dri-Power® Fleece Collection features moisture-wicking technology to assist in keeping the wearer dry, fresh and comfortable, no matter what the day brings. Made with three-end fleece construction that provides durability and a smoother print surface, plus thick and uniform brushing for incredible loftiness. Available in multiple styles and colors in adult and youth sizes, this collection is ideal for sideline and fan-wear programs.



**DRI-POWER®**  
Keeps you dry & cool



**SOFT FABRIC**  
Brushed for increased  
warmth and comfort



**COMFORT STITCHING**  
Smooth seams for  
less irritation



# 693HBM0

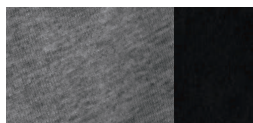
## DRI-POWER® COLOR-BLOCK HOODED SWEATSHIRT

9.3 oz | 315 g  
50/50 Cotton/Polyester Pre-shrunk Fleece

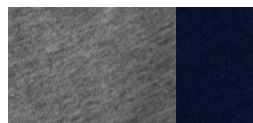
- Dri-Power® moisture wicking
- Three-end fleece
- Three-piece double-ply hood
- Rib knit cuffs and waistband
- Front pouch pocket
- “R” logo flagtag at waistband
- 4 colors

Adult: S–3XL

Fabric Variation: Oxford — 47% Cotton / 53% Polyester



OXFORD/BLACK



OXFORD/NAVY



OXFORD/TRUE RED



WHITE/OXFORD





## 697HBM1

### DRI-POWER® FULL-ZIP HOODED SWEATSHIRT

9.3 oz | 315 g  
50/50 Cotton/Polyester Pre-shrunk Fleece

- Dri-Power® moisture wicking
- Three-end fleece
- 2-ply hood with grommets and matching drawcord
- Full front center zipper
- Rib knit cuffs and waistband
- Front pouch pocket
- "R" logo flagtag at waistband
- 3 colors

Adult: S – 3XL

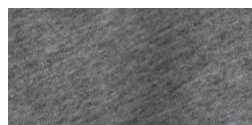
Fabric Variation: Oxford — 47% Cotton / 53% Polyester



BLACK



NAVY



OXFORD

**THREE-END FLEECE**  
provides durability and softness



## 695HBM1

### DRI-POWER® HOODED SWEATSHIRT

9.3 oz | 315 g

50/50 Cotton/Polyester Pre-shrunk Fleece

- Dri-Power® moisture wicking
- Three-end fleece
- 2-ply hood with grommets and drawcord
- Rib knit cuffs and waistband
- Front pouch pocket
- "R" logo flagtag at waistband
- 15 colors

Adult: S–4XL

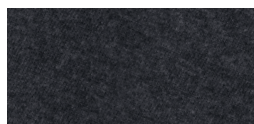
Fabric Variation: Oxford — 47% Cotton / 53% Polyester



ASH



BLACK



BLACK HEATHER



BURNT ORANGE



CARDINAL



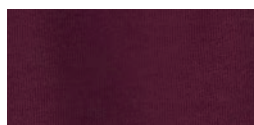
COLLEGIATE BLUE



DARK GREEN



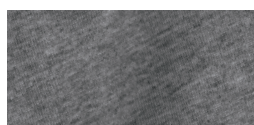
GOLD



MAROON



NAVY



OXFORD



PURPLE



ROYAL



TRUE RED



WHITE





## 995HBB1

### DRI-POWER® YOUTH HOODED SWEATSHIRT

9.3 oz | 315 g  
50/50 Cotton/Polyester Pre-shrunk Fleece

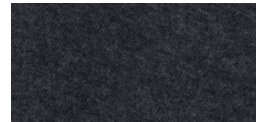
- Dri-Power® moisture wicking
- Three-end fleece
- 2-ply hood
- Rib knit cuffs and waistband
- Front pouch pocket
- "R" logo flagtag at waistband
- CPSIA compliant: Russell Athletic® youth products and packaging comply with the tracking label requirements of the Consumer Product Safety Improvement Act
- 6 colors

Youth: S – XL

Fabric Variation: Oxford — 47% Cotton / 53% Polyester



BLACK



BLACK HEATHER



NAVY



OXFORD



ROYAL



TRUE RED



## 698HBM1

### DRI-POWER® SWEATSHIRT

9.3 oz | 315 g  
50/50 Cotton/Polyester Pre-shrunk Fleece

- Dri-Power® moisture wicking
- Three-end fleece
- Rib knit collar, cuffs and waistband
- "R" logo flagtag at waistband
- 15 colors

Adult: S - 4XL

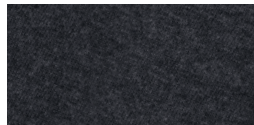
Fabric Variation: Oxford — 47% Cotton / 53% Polyester



ASH



BLACK



BLACK HEATHER



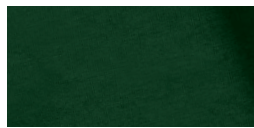
BURNT ORANGE



CARDINAL



COLLEGIATE BLUE



DARK GREEN



GOLD



MAROON



NAVY



OXFORD



PURPLE



ROYAL



TRUE RED



WHITE



## 998HBB1

**DRI-POWER®  
YOUTH SWEATSHIRT**

9.3 oz | 315 g  
50/50 Cotton/Polyester Pre-shrunk Fleece

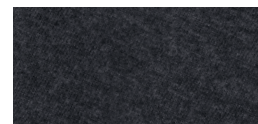
- Dri-Power® moisture wicking
- Three-end fleece
- Rib knit collar, cuffs, and waistband
- "R" logo flagtag at waistband
- CPSIA compliant: Russell Athletic® youth products and packaging comply with the tracking label requirements of the Consumer Product Safety Improvement Act
- 6 colors

Youth: S–XL

Fabric Variation: Oxford — 47% Cotton / 53% Polyester



BLACK



BLACK HEATHER



NAVY



OXFORD



ROYAL



TRUE RED

**DRI-POWER® TECHNOLOGY**

wicks moisture away from skin



## 1Z4HBM0

### DRI-POWER® QUARTER-ZIP CADET COLLAR SWEATSHIRT

9.3 oz | 315 g  
50/50 Cotton/Polyester Pre-shrunk Fleece

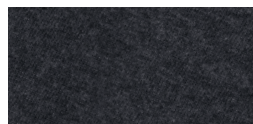
- Dri-Power® moisture wicking
- Three-end fleece
- Reverse coil center front zipper with jersey zipper garage
- Side-entry welt pockets
- Rib knit cuffs and waistband
- "R" logo flagtag at waistband
- 4 colors

Adult: S–3XL

Fabric Variation: Oxford — 47% Cotton / 53% Polyester



BLACK



BLACK HEATHER



NAVY



OXFORD





## 029HBM0

### DRI-POWER® POCKETED CLOSED-BOTTOM SWEATPANT

9.3 oz | 315 g  
50/50 Cotton/Polyester Pre-shrunk Fleece

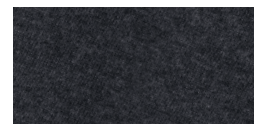
- Dri-Power® moisture wicking
- Three-end fleece
- Side-entry pockets
- Elastic waistband with internal drawcord
- Elastic-bottom leg opening
- Graded inseams
- Russell Athletic logo on right hip
- 4 colors

Adult: S – 4XL

Fabric Variation: Oxford — 47% Cotton / 53% Polyester



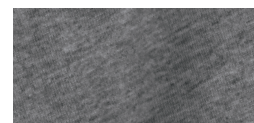
BLACK\*



BLACK HEATHER\*



NAVY\*



OXFORD

\*Color not available in 4XL

## 696HBM0

### DRI-POWER® SWEATPANT

9.3 oz | 315 g

50/50 Cotton/Polyester Pre-shrunk Fleece

- Dri-Power® moisture wicking
- Three-end fleece
- Elastic-bottom leg opening
- Covered elastic waistband with internal drawcord
- Graded inseams
- 5 colors

Adult: S – 4XL

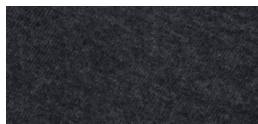
Fabric Variation: Oxford — 47% Cotton / 53% Polyester



ASH\*



BLACK\*



BLACK HEATHER\*



NAVY\*



OXFORD

\*Color not available in 4XL





**DRI-POWER® FLEECE**  
ideal for casual to workout wear

64RTTM0

696HBM0



## 596HBM0

### DRI-POWER® POCKETED OPEN-BOTTOM SWEATPANT

9.3 oz | 315 g  
50/50 Cotton/Polyester Pre-shrunk Fleece

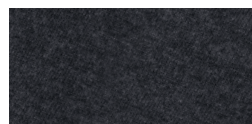
- Dri-Power® moisture wicking
- Three-end fleece
- Side-entry pockets
- Elastic waistband with internal drawcord
- Graded inseams
- Russell Athletic logo on right hip
- 4 colors

Adult: S–3XL

Fabric Variation: Oxford — 47% Cotton / 53% Polyester



BLACK



BLACK HEATHER



NAVY



OXFORD





## 596HBB2

### DRI-POWER® YOUTH POCKETED OPEN-BOTTOM SWEATPANT

9.3 oz | 315 g  
50/50 Cotton/Polyester Pre-shrunk Fleece

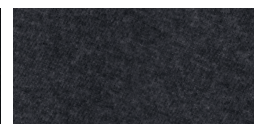
- Dri-Power® moisture wicking
- Three-end fleece
- Side-entry pockets
- Elastic waistband
- Graded inseams
- Russell Athletic logo on right hip
- CPSIA compliant: Russell Athletic® youth products and packaging comply with the tracking label requirements of the Consumer Product Safety Improvement Act
- 4 colors

Youth: S – XL

Fabric Variation: Oxford — 47% Cotton / 53% Polyester



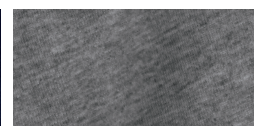
BLACK



BLACK HEATHER



NAVY



OXFORD

**DURABLE CONSTRUCTION**  
with a 9" inseam for a comfortable fit



693HBM0

7FSHBM0





## 7FSHBM0

### DRI-POWER® POCKETED SHORT

9.3 oz | 315 g

50/50 Cotton/Polyester Pre-shrunk Fleece

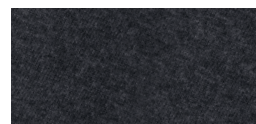
- Dri-Power® moisture wicking
- Three-end fleece
- Side-entry pockets
- Covered elastic waistband with internal drawcord
- 9" inseam
- Russell Athletic logo at lower left hem
- 3 colors

Adult: S – 3XL

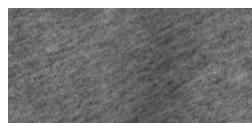
Fabric Variation: Oxford — 47% Cotton / 53% Polyester



BLACK



BLACK HEATHER



OXFORD



## LADIES' FLEECE

Our Ladies' sweats are made with brushed two-end fleece that offers a super soft fabric with added warmth and comfort. This collection is trans-seasonal and designed with the active, modern-day woman in mind, and is ideal for running errands, working out or relaxing after a long day.





## LF1YHX0

### LADIES' HOODED SWEATSHIRT

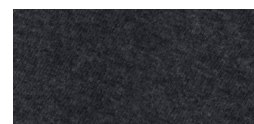
7.6 oz | 258 g  
60/40 Cotton/Polyester Fleece

- Brushed fabric for warmth, layering, and comfort
- Two-end fleece
- Three-piece single-ply hood
- Front pouch pocket
- Russell Athletic logo on lower left sleeve
- 6 colors

Ladies': S - 2XL



BLACK



BLACK HEATHER



NAVY



OXFORD



TRUE RED



WHITE

### SUPER SOFT

feels great against the skin



## LF3YHX0

### LADIES' SWEATSHIRT

7.6 oz | 258 g

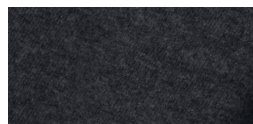
60/40 Cotton/Polyester Fleece

- Brushed fabric for warmth, layering, and comfort
- Two-end fleece
- 1x1 ribbed collar, v-patch, cuffs, and waistband
- Raglan sleeves for full range of motion
- Russell Athletic logo on lower left sleeve
- 6 colors

Ladies': S - 2XL



BLACK



BLACK HEATHER



NAVY



OXFORD



TRUE RED



WHITE





## LF5YHX0

### LADIES' SWEATPANT

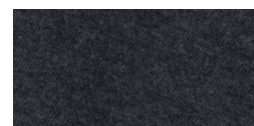
7.6 oz | 258 g  
60/40 Cotton/Polyester Fleece

- Brushed fabric for warmth, layering, and comfort
- Two-end fleece
- Rib trim waistband with external drawcord
- Side-entry pockets
- Upper back yoke with single-needle topstitch
- Graded inseams
- Russell Athletic logo on right hip
- 4 colors

Ladies': S-2XL



BLACK



BLACK HEATHER



NAVY



OXFORD







## ESSENTIAL JERSEY

This trans-seasonal collection—offered in an array of adult, ladies', and youth styles—provides the comfort of cotton combined with the benefits of performance. With Dri-Power® moisture wicking, odor protection and UPF 30+, these garments were created for functionable comfort that can easily transition from a casual outing to a workout. With an offering ranging from tanks to full-zips, there's something for everyone in this collection.



**DRI-POWER®**  
Keeps you dry & cool



**ODOR PROTECTION**  
Helps keep fabric fresh from odors



**UPF 30+**  
Protection from harmful rays



**SOFT FABRIC**  
Brushed for increased warmth and comfort



64RTTM0

64RTTM0

---

## TRIPLE-ACTION BENEFITS

for maximum,  
long-lasting comfort

651AFM1

TS7X2M0





## 64RTTM0

### ESSENTIAL RINGER T-SHIRT

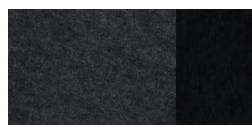
4.75 oz | 160 g

60/40 Cotton/Polyester Pre-shrunk Jersey

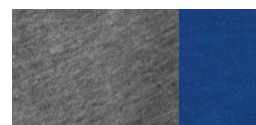
- Dri-Power® moisture wicking
- Odor protection
- UPF 30+ protection
- Premium softness, great for all day wear
- 30 singles
- Contrast rib collar and cuffs
- Oxford back neck tape on all colors
- Tagless label
- Russell Athletic logo at left sleeve hem
- 5 colors

Adult: S – 3XL

Fabric Variation: Oxford — 47% Cotton / 53% Polyester



BLACK HEATHER/  
BLACK



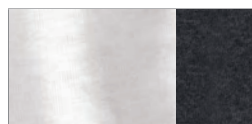
OXFORD/ROYAL



OXFORD/TRUE RED



VINTAGE  
HEATHER NAVY/NAVY



WHITE/  
BLACK HEATHER



64TTTM0

651AFM1

64STTM0

TS7X2M0

---

**TAGLESS LABELS**  
for added comfort





## 64STTM0

### ESSENTIAL T-SHIRT

4.75 oz | 160 g

60/40 Cotton/Polyester Pre-shrunk Jersey

- Dri-Power® moisture wicking
- Odor protection
- UPF 30+ protection
- Premium softness, great for all day wear
- 30 singles
- Oxford back neck tape on all colors
- Tagless label
- Russell Athletic logo at lower left hem
- Companion to style 64STTX0
- 23 colors

Adult: S–4XL

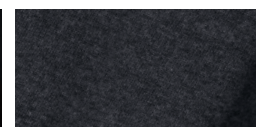
**Fabric Variations:** Ash — 50% Cotton / 50% Polyester  
Oxford — 47% Cotton / 53% Polyester



ASH



BLACK



BLACK HEATHER



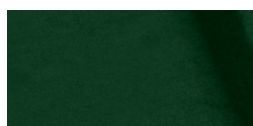
BURNT ORANGE



CARDINAL



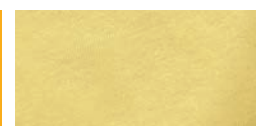
COLLEGIATE BLUE



DARK GREEN



GOLD



GT GOLD



KELLY



MAROON



NAVY



OXFORD



PURPLE



RETRO  
HEATHER GREEN



RETRO  
HEATHER PURPLE



RETRO  
HEATHER ROYAL



ROYAL



TRUE RED



VINTAGE  
HEATHER NAVY



VINTAGE  
HEATHER RED



WATERMELON PINK



WHITE



## 64STTX0

### ESSENTIAL LADIES' T-SHIRT

4.75 oz | 160 g  
60/40 Cotton/Polyester Pre-shrunk Jersey

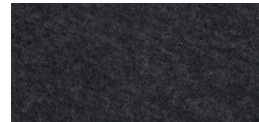
- Dri-Power® moisture wicking
- Odor protection
- UPF 30+ protection
- Premium softness, great for all day wear
- 30 singles
- Oxford back neck tape on all colors
- Tagless label
- Russell Athletic logo at lower left hem
- Companion to style 64STTM0
- 14 colors

Ladies': XS – 2XL

Fabric Variation: Oxford — 47% Cotton / 53% Polyester



BLACK



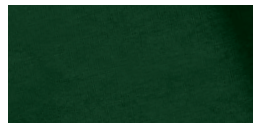
BLACK HEATHER



CARDINAL



COLLEGIATE BLUE



DARK GREEN



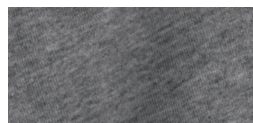
GOLD



MAROON



NAVY



OXFORD



PURPLE



ROYAL



TRUE RED



WATERMELON PINK



WHITE



64STTX0

64BTTX0

**PREMIUM SOFTNESS**  
great for all day wear



## 64STTB0

### ESSENTIAL YOUTH T-SHIRT

4.75 oz | 160 g  
60/40 Cotton/Polyester Pre-shrunk Jersey

- Dri-Power® moisture wicking
- Odor protection
- UPF 30+ protection
- Premium softness, great for all day wear
- 30 singles
- Oxford back neck tape on all colors
- Tagless label
- Russell Athletic logo at lower left hem
- CPSIA compliant: Russell Athletic® youth products and packaging comply with the tracking label requirements of the Consumer Product Safety Improvement Act
- 15 colors

Youth: S–XL

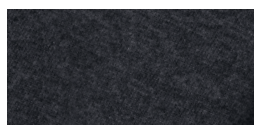
**Fabric Variations:** Ash — 50% Cotton / 50% Polyester  
Oxford — 47% Cotton / 53% Polyester



ASH



BLACK



BLACK HEATHER



BURNT ORANGE



CARDINAL



COLLEGIATE BLUE



DARK GREEN



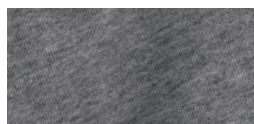
GOLD



MAROON



NAVY



OXFORD



PURPLE



ROYAL



TRUE RED



WHITE





## 64LTTM0

### ESSENTIAL LONG-SLEEVE T-SHIRT

4.75 oz | 160 g

60/40 Cotton/Polyester Pre-shrunk Jersey

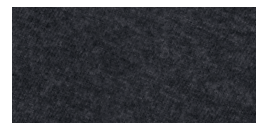
- Dri-Power® moisture wicking
- Odor protection
- UPF 30+ protection
- Premium softness, great for all day wear
- 30 singles
- Oxford back neck tape on all colors
- Tagless label
- Russell Athletic logo at lower left hem
- Companion to style 64LTTX0
- 11 colors

Adult: S–3XL

Fabric Variation: Oxford — 47% Cotton / 53% Polyester



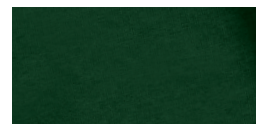
BLACK



BLACK HEATHER



CARDINAL



DARK GREEN



MAROON



NAVY



OXFORD



PURPLE



ROYAL



TRUE RED



WHITE



## 64LTTX0

### ESSENTIAL LADIES' LONG-SLEEVE T-SHIRT

4.75 oz | 160 g  
60/40 Cotton/Polyester Pre-shrunk Jersey

- Dri-Power® moisture wicking
- Odor protection
- UPF 30+ protection
- Premium softness, great for all day wear
- 30 singles
- Oxford back neck tape on all colors
- Tagless label
- Russell Athletic logo at lower left hem
- Companion to style 64LTTM0
- 8 colors

Ladies': XS - 2XL

Fabric Variation: Oxford — 47% Cotton / 53% Polyester



BLACK



CARDINAL



NAVY



OXFORD



PURPLE



ROYAL



TRUE RED



WHITE





## 64TTTTMO

### ESSENTIAL TANK

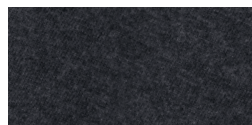
4.75 oz | 160 g

60/40 Cotton/Polyester Pre-shrunk Jersey

- Dri-Power® moisture wicking
- Odor protection
- UPF 30+ protection
- Premium softness, great for all day wear
- 30 singles
- Bound neck and armholes
- Tagless label
- Russell Athletic logo at lower left hem
- Companion to style 64TTTX0
- 3 colors

Adult: S – 4XL

Fabric Variation: Oxford — 47% Cotton / 53% Polyester



BLACK HEATHER



OXFORD



WHITE

## 64TTTX0

### ESSENTIAL LADIES' TANK

4.75 oz | 160 g

60/40 Cotton/Polyester Pre-shrunk Jersey

- Dri-Power® moisture wicking
- Odor protection
- UPF 30+ protection
- Premium softness, great for all day wear
- 30 singles
- Flattering fit with slight contour shaping
- Oxford back neck tape on all colors
- Tagless label
- Russell Athletic logo at center back neck
- Companion to style 64TTM0
- 4 colors

Ladies': S – 2XL

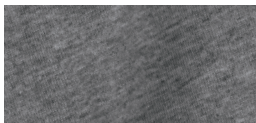
Fabric Variation: Oxford — 47% Cotton / 53% Polyester



BLACK



NAVY



OXFORD



VERY BERRY





**FLATTERING FIT**  
with slight contour shaping

64TTTX0

64BTTX0

---

**ATHLETIC STYLING**  
for ease of movement

64MTTM0

25843M0



## 64MTTMO

## ESSENTIAL MUSCLE T-SHIRT

4.75 oz | 160 g

60/40 Cotton/Polyester Pre-shrunk Jersey

- Dri-Power® moisture wicking
- Odor protection
- UPF 30+ protection
- Premium softness, great for all day wear
- Athletic styling for ease of movement
- 30 singles
- Oxford back neck tape on all colors
- Tagless label
- Russell Athletic logo at lower left hem
- 6 colors

Adult: S – 4XL

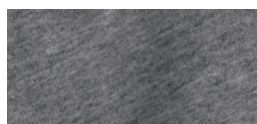
Fabric Variation: Oxford — 47% Cotton / 53% Polyester



BLACK



NAVY\*



OXFORD



ROYAL\*



TRUE RED\*



WHITE

\*Color not available in 4XL



## VERSATILE STYLING

easily transitions from casual  
to performance wear

64HTTM0





## 64HTTMO

### ESSENTIAL PULLOVER HOOD

4.75 oz | 160 g

60/40 Cotton/Polyester Pre-shrunk Jersey

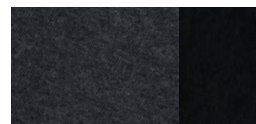
- Dri-Power® moisture wicking
- Odor protection
- UPF 30+ protection
- Premium softness, great for all day wear
- 30 singles
- Contrast raglan sleeves and hood
- Front pouch pocket
- Oxford back neck tape on all colors
- Russell Athletic logo at lower left sleeve
- 6 colors

Adult: S – 3XL

**Fabric Variations:** Ash — 50% Cotton / 50% Polyester  
Oxford — 47% Cotton / 53% Polyester



ASH/BLACK HEATHER



BLACK HEATHER/  
BLACK



OXFORD/DARK GREEN



OXFORD/ROYAL



OXFORD/TRUE RED



VINTAGE  
HEATHER NAVY/NAVY



## 64ZTTX0

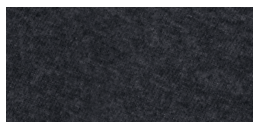
### ESSENTIAL LADIES' FULL-ZIP HOOD

4.75 oz | 160 g  
60/40 Cotton/Polyester Pre-shrunk Jersey

- Dri-Power® moisture wicking
- Odor protection
- UPF 30+ protection
- Premium softness, great for all day wear
- 30 singles
- Flattering fit with slight contour shaping
- Full front concealed zipper with natural zipper tape
- Three-piece hood with natural drawcord
- Oxford back neck tape on all colors
- Tagless label
- Russell Athletic logo at lower left sleeve
- 4 colors

Ladies': S - 2XL

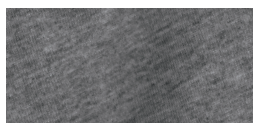
Fabric Variation: Oxford — 47% Cotton / 53% Polyester



BLACK HEATHER



NAVY



OXFORD



VERY BERRY





## 64JTTX0

### ESSENTIAL LADIES' JOGGER

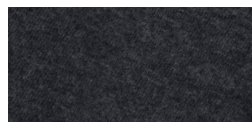
4.75 oz | 160 g

60/40 Cotton/Polyester Pre-shrunk Jersey

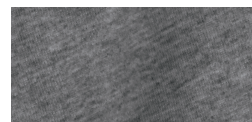
- Dri-Power® moisture wicking
- Odor protection
- UPF 30+ protection
- Premium softness, great for all day wear
- 30 singles
- Tapered legs with rib cuffs
- Rib waistband with external natural drawcord
- Quarter top pockets provide flattering fit
- Russell Athletic logo at right left hip
- 2 colors

Ladies': S - 2XL

Fabric Variation: Oxford — 47% Cotton / 53% Polyester



BLACK HEATHER



OXFORD



## 64BTTX0

### ESSENTIAL LADIES' SHORT

4.75 oz | 160 g  
60/40 Cotton/Polyester Pre-shrunk Jersey

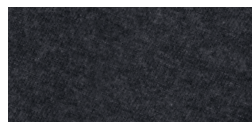
- Dri-Power® moisture wicking
- Odor protection
- UPF 30+ protection
- Premium softness, great for all day wear
- 30 singles
- 3" inseam
- Inside elastic with internal drawcord
- Russell Athletic logo at lower right hem
- 4 colors

Ladies': S - 2XL

Fabric Variation: Oxford — 47% Cotton / 53% Polyester



BLACK



BLACK HEATHER



NAVY



OXFORD





## 25843M0

### COTTON POCKETED SHORT

6.8 oz | 230 g  
100% Cotton Pre-shrunk Jersey

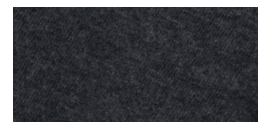
- Covered elastic waistband with internal drawcord
- Side-entry pockets
- Russell Athletic logo at lower right leg
- 4 colors

Adult: S–4XL  
S–M: 9" inseam  
L–4XL: 10" inseam

Fabric Variations: Black Heather — 50% Cotton / 50% Polyester  
Oxford — 47% Cotton / 53% Polyester



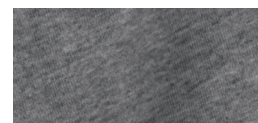
BLACK



BLACK HEATHER



NAVY



OXFORD



64STTX0

64BTTX0



# FIT GUIDE

\*All measurements are width x length (bottoms: waist x inseam)



COTTON CLASSICS	FLEECE		XS	S	M	L	XL	2XL	3XL	4XL
	Cotton Classic Fleece Sweatshirt	82RNSM0		20" x 28"	22" x 29"	24" x 30"	26" x 31"	28" x 32"	30" x 33"	
	Cotton Classic Fleece Hoodie	82ONSM0		20" x 28"	22" x 29"	24" x 30"	26" x 31"	28" x 32"	30" x 33"	
	Cotton Classic Fleece Open-Bottom Pant	82ANSM0		12.5" x 31"	13.5" x 31"	15" x 32"	16.5" x 32"	18" x 33"	19.5" x 33"	
	JERSEY		XS	S	M	L	XL	2XL	3XL	4XL
	Cotton Classic T-Shirt	600MRUS		18" x 28"	20" x 29"	22" x 30"	24" x 31"	26" x 32"	28" x 33"	
	Cotton Classic Long-Sleeve T-Shirt	600LRUS		18" x 28"	20" x 29"	22" x 30"	24" x 31"	26" x 32"	28" x 33"	

PERFORMANCE	POLYESTER		XS	S	M	L	XL	2XL	3XL	4XL
	Dri-Power® Core Performance T-Shirt	629X2M1		18" x 28"	20" x 29"	22" x 30"	24" x 31"	26" x 32"	28" x 33"	30" x 34"
	Dri-Power® Core Performance Youth T-Shirt	629X2B1		16" x 22"	17" x 23"	18" x 25"	19.5" x 26"			
	Dri-Power® Core Performance Youth Pocketed Short	TS7X2B0		10" x 7"	11" x 7"	12" x 7"	13" x 7"			
	Dri-Power® Core Performance Long-Sleeve T-Shirt	631X2M1		18" x 28"	20" x 29"	22" x 30"	24" x 31"	26" x 32"	28" x 33"	30" x 34"
	Dri-Power® Core Performance Pocketed Short	TS7X2M0		13" x 10"	14" x 10"	15" x 10"	16" x 10"	17" x 10"	18" x 10"	
	Dri-Power® Tricot Mesh Short	659AFMK		13" x 9"	14" x 9"	15" x 9"	16" x 9"	17" x 9"	18" x 9"	19" x 9"
	Dri-Power® Youth Tricot Mesh Short	659AFB0		10" x 6"	11" x 6"	12" x 6"	13" x 6"			
	Dri-Power® Tricot Mesh Pocketed Short	651AFM1		13" x 9"	14" x 9"	15" x 9"	16" x 9"	17" x 9"	18" x 9"	
	Dri-Power® Sport Shirt	7EPTUM0		19" x 29"	21" x 30"	23" x 31"	25" x 32"	27" x 33"	29" x 34"	31" x 35"
	Dri-Power® Ladies' Sport Shirt	7EPTUX0		18" x 26"	19.5" x 27"	21" x 28"	22.5" x 29"	24" x 30"		
	Dri-Power® Quarter-Zip Pullover	QZ7EAM0		19" x 28"	21" x 29"	23" x 30"	25" x 31"	27" x 32"	29" x 33"	
	Dri-Power® Ladies' Quarter-Zip Pullover	QZ7EAX0		17.5" x 25"	19" x 26"	20.5" x 27"	22" x 28"	23.5" x 29"		
	FLEECE		XS	S	M	L	XL	2XL	3XL	4XL
	Dri-Power® Color-Block Hooded Sweatshirt	693HBM0		20" x 28"	22" x 29"	24" x 30"	26" x 31"	28" x 32"	30" x 33"	
	Dri-Power® Full-Zip Hooded Sweatshirt	697HBM1		20" x 28"	22" x 29"	24" x 30"	26" x 31"	28" x 32"	30" x 33"	
	Dri-Power® Hooded Sweatshirt	695HBM1		20" x 28"	22" x 29"	24" x 30"	26" x 31"	28" x 32"	30" x 33"	32" x 34"
	Dri-Power® Youth Hooded Sweatshirt	995HBB1		16" x 21.5"	17" x 23.5"	18" x 25.5"	20" x 27.5"			
	Dri-Power® Sweatshirt	698HBM1		20" x 28"	22" x 29"	24" x 30"	26" x 31"	28" x 32"	30" x 33"	32" x 34"
	Dri-Power® Youth Sweatshirt	998HBB1		16" x 21.5"	17" x 23.5"	18" x 25.5"	20" x 27.5"			
	Dri-Power® Quarter-Zip Cadet Collar Sweatshirt	1Z4HBM0		20" x 28"	22" x 29"	24" x 30"	26" x 31"	28" x 32"	30" x 33"	
	Dri-Power® Pocketed Closed-Bottom Sweatpant	029HBM0		13" x 29.5"	14" x 30.5"	15" x 31.5"	16" x 32.5"	17" x 33.5"	18" x 34.5"	19" x 35.5"
	Dri-Power® Sweatpant	696HBM0		13" x 29.5"	14" x 30.5"	15" x 31.5"	16" x 32.5"	17" x 33"	18" x 33.5"	19" x 34"
	Dri-Power® Pocketed Open-Bottom Sweatpant	596HBM0		13" x 30"	14" x 31"	15" x 32"	16" x 33"	17" x 34"	18" x 35"	19" x 36"
	Dri-Power® Youth Pocketed Open-Bottom Sweatpant	596HBB2		9" x 21.75"	10" x 24.75"	12" x 27.75"	12" x 30.75"			
	Dri-Power® Pocketed Short	7FSHBM0		11" x 9"	13" x 9"	15" x 9"	16.5" x 9"	18" x 9"	19.5" x 9"	
	Ladies' Hooded Sweatshirt	LF1YHX0		18.5" x 26"	20" x 27"	21.5" x 28"	23" x 29"	24.5" x 30"		
	Ladies' Sweatshirt	LF3YHX0		18.5" x 25.5"	20" x 26.5"	21.5" x 27.5"	23" x 28.5"	24.5" x 29.5"		
	Ladies' Sweatpant	LF5YHX0		12" x 31"	13" x 31"	14" x 32"	15" x 32"	16" x 32"		
	JERSEY		XS	S	M	L	XL	2XL	3XL	4XL
	Essential Ringer T-Shirt	64RTTM0		18.5" x 28"	20.5" x 29"	22.5" x 30"	24.5" x 31"	26.5" x 32"	28.5" x 33"	
	Essential T-Shirt	64STTM0		18.5" x 28"	20.5" x 29"	22.5" x 30"	24.5" x 31"	26.5" x 32"	28.5" x 33"	30" x 34"
	Essential Ladies' T-Shirt	64STTX0	15.5" x 24"	17" x 25"	18.5" x 26"	20" x 27"	21.5" x 28"	23" x 29"		
	Essential Youth T-Shirt	64STTB0		16" x 22"	17" x 23"	18" x 25"	19" x 26"			
	Essential Long-Sleeve T-Shirt	64LTTM0		18.5" x 28"	20.5" x 29"	22.5" x 30"	24.5" x 31"	26.5" x 32"	28.5" x 33"	
	Essential Ladies' Long-Sleeve T-Shirt	64LTTX0	15.5" x 24"	17" x 25"	18.5" x 26"	20" x 27"	21.5" x 28"	23" x 29"		
	Essential Tank	64TTTM0		18" x 28"	20" x 29"	22" x 30"	24" x 31"	26" x 32"	28" x 33"	
	Essential Ladies' Tank	64TTTX0		17" x 26.5"	18" x 27.5"	19.5" x 28.5"	21" x 29.5"	22.5" x 30.5"		
	Essential Muscle T-Shirt	64MTTM0		18.5" x 28"	20.5" x 29"	22.5" x 30"	24.5" x 31"	26.5" x 32"	28.5" x 33"	30" x 34"
	Essential Pullover Hood	64HTTM0		19" x 28"	21" x 29"	23" x 30"	25" x 31"	27" x 32"	29" x 33"	
	Essential Ladies' Full-Zip Hood	64ZTTX0		18.5" x 25"	19.5" x 26"	21" x 27"	22.5" x 28"	24" x 29"		
	Essential Ladies' Jogger	64JTTX0		14.5" x 29.5"	15.5" x 29.5"	16.5" x 30.5"	17.5" x 30.5"	18.5" x 30.5"		
	Essential Ladies' Short	64BTXX0		13" x 3"	14" x 3"	15" x 3"	16" x 3"	17" x 3"		
	Cotton Pocketed Short	25843M0		12" x 9"	14" x 9"	16" x 10"	18" x 10"	20" x 10"	22" x 10"	24" x 10"



OUR COMMITMENT TO

# CORPORATE SOCIAL RESPONSIBILITY

At Fruit of the Loom, Inc., we have a commitment to conducting business in a socially-responsible fashion, balancing the needs of the business with our impact on the environment, the people involved in our supply chain and the communities in which we operate.

An important component is our Fruit Code of Conduct which sets forth our standards for business ethics and our respect for human rights and the environment. We own and manage our factory operations which produce apparel for the Printwear channel. This greater control provides our customers with confidence about the integrity of our supply chain and the manner in which we do business.

More information about our Fruit of the Loom family of brands, our Code of Conduct along with other CSR, regulatory compliance and product safety standards can be found at [www.fotlinc.com](http://www.fotlinc.com).



We're a member of the TSC



We're a member of Cotton Leads



Fruit of the Loom's compliance program was accredited by the Fair Labor Association in 2011. As an FLA Participating Company, Fruit of the Loom, Inc. commits to upholding the FLA Principles of Fair Labor and Responsible Sourcing.





We're a member of the AAFA



We're a member of FundaHRSE



We're a member of FundeMAS



[RUSSELLATHLETICBUSINESS.COM](https://russellathleticbusiness.com)

877.879.8407 | CANADA 800.567.7662

@RussellB2B

