

# BASEBALL JERSEYS

BASEBALL

UNIFORM

SOFTBALL

BAGS

FOOTBALL

BASKETBALL

SOCCER

TRAINING

SPORTSWEAR

VOLLEYBALL

LACROSSE

OFFICIALS

PHYSICAL ED.



Back

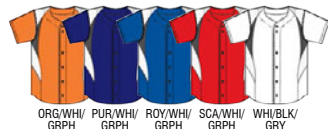
## Bullpen NEW! AVAILABLE JAN. 2016

AS - A3XL; YS - YXL

- ▲ "KOMB JERSEY", 100% polyester knit is a mid-weight fabric that is highly abrasion resistant with "PIN-DOT" mesh 100% polyester
- ▲ Set in sleeves with double needle hem
- ▲ 2 color contrasting side and shoulder insert
- ▲ 6 button front spaced for lettering
- ▲ Curved shirt tail bottom with serged edge

BS33A - Adult - \$26.50  
BS33Y - Youth - \$24.00

Upcharge for 2XL & Larger



## Relief NEW! AVAILABLE JAN. 2015

AS - A3XL; YS - YXL

- ▲ "KOMB JERSEY", 100% polyester knit is a mid-weight fabric that is highly abrasion resistant with "PIN-DOT" mesh 100% polyester
- ▲ Mitered V-neck with set in sleeves with double needle hem
- ▲ 2 color contrasting side and sleeve inserts
- ▲ Straight bottom with double needle hem

BS34A - Adult - \$25.00  
BS34Y - Youth - \$22.00

Upcharge for 2XL & Larger



**SIZING GUIDE**  
**PAGE 192**



## Reliever/Reliever Sleeveless NEW! AVAILABLE JAN. 2016

AS - A3XL; YS - YXL

- ▲ TEK-KNIT, 100% polyester, double knit is a pro-weight fabric that is knit to allow four-way stretch, and is highly abrasion resistant with "PIN-DOT" mesh 100% polyester inserts on front, back and under sleeve
- ▲ Baseball jersey with set in sleeves with double needle hem
- ▲ Baseball sleeveless vest with double needle hem armholes
- ▲ 6 button front spaced for lettering
- ▲ Curved shirt tail bottom with serged edge

**BS149A** - Sleeved - Adult - \$24.00  
**BS149Y** - Sleeved - Youth - \$22.50  
**BS169A** - Sleeveless - Adult - \$22.00  
**BS169Y** - Sleeveless - Youth - \$20.50

Upcharge for 2XL & Larger



## Ace/Ace Sleeveless

AS - A4XL; YS - YXL

- ▲ PRO-WARP, 100% polyester, warp-knit is a pro-weight fabric with knit pinstripes that is highly abrasion resistant
- ▲ Baseball jersey with set in sleeves with double needle hem
- ▲ Baseball sleeveless vest with double needle hem
- ▲ 6 button front spaced for lettering
- ▲ Curved shirt tail bottom with serged edge

**BS14A** - Sleeved - Adult - \$36.40  
**BS14Y** - Sleeved - Youth - \$36.40  
**BS16A** - Sleeveless - Adult - \$36.40  
**BS16Y** - Sleeveless - Youth - \$36.40

Upcharge for 2XL & Larger



## ADD CUSTOM BRAIDS!



We offer custom braids on all stock apparel. Call us for more information and pricing.



# BASEBALL JERSEYS

## Clean-Up

AS - A3XL; YS - YXL

- ▲ "ACTIVE JERSEY" 100% Polyester mid-weight jersey with "PIN-DOT" mesh 100% polyester inserts
- ▲ Contrasting color side and upper back mesh inserts
- ▲ Raglan sleeve
- ▲ Double needle hemmed sleeve
- ▲ Double needle straight hemmed bottom
- ▲ 2 button placket with 2 color self material collar

BST72A - Adult - \$24.00

BST72Y - Youth - \$24.00

Upcharge for 2XL & Larger



BLK/WHI CRD/WHI FOR/WHI GLD/WHI LTB/WHI MAR/WHI Nvy/WHI ORG/WHI PUR/WHI ROY/WHI SCA/WHI WHI/GRY



Back

## Cycle

AS - A3XL; YS - YXL

- ▲ POWER, 100% polyester, flat back mesh, is a mid-weight jersey fabric with a smooth side and a slightly textured side
- ▲ Solid color faux front jersey
- ▲ Two functioning buttons with a full front button look
- ▲ Double needle hemmed sleeves
- ▲ Split tail jersey - serge finish bottom
- ▲ Full cut with raglan sleeves
- ▲ 3/16" braid on raglan seams and sleeves ends

BS40A - Adult - \$22.80

BS40Y - Youth - \$22.80

Upcharge for 2XL & Larger



BLK/WHI FOR/WHI GRY/BLK Nvy/WHI PUR/WHI ROY/WHI SCA/WHI WHI/BLK WHI/ROY WHI/Nvy WHI/SCA



**SIZING GUIDE**  
**PAGE 192**

## Captain 2

AS - A3XL; YS - YXL

- POWER, 100% polyester, flat back mesh, is a mid-weight jersey fabric with a smooth side and a slightly textured side
- Full-cut, generously sized
- 2 button placket front
- Self material collar
- Double needle hemmed sleeves and bottom
- Contrast color side and raglan sleeve seam insert

BST62A - Adult - \$21.30  
BST62Y - Youth - \$21.30



Upcharge for 2XL & Larger



## Double Play

AS - A4XL; YS - YXL

- Z-Cloth, 100% polyester, interlock fabric has a silky smooth feel, is lightweight and snag resistant
- Full cut body with self material side inserts
- Raglan sleeves with self material over shoulder insert
- Straight double needle hemmed bottom
- 2 button, placket front with self material collar
- Exposed stitching on insert seams

BST52A - Adult - \$19.20  
BST52Y - Youth - \$19.20



Upcharge for 2XL & Larger





# BASEBALL JERSEYS

## Captain

AS - A3XL; YS - YXL

- POWER, 100% polyester, flat back mesh, is a mid-weight jersey fabric with a smooth side and a slightly textured side
- Full-cut, generously sized tee
- Self material collar
- Double needle hemmed sleeves and bottom
- Contrast color side and raglan sleeve seam insert

BST6A - Adult - \$19.60

BST6Y - Youth - \$19.60

Upcharge for 2XL & Larger



## Leader NEW!

AS - A4XL; YS - YXL

- Impact 85, premium weight 100% polyester interlock jersey
- Self-material crew neck with back neck tape
- Technical cut shoulder insert
- Set in 1/4 length sleeves
- 2 needle hemmed straight bottom and sleeves
- Guarantee against shrinkage and fading

BST85 - Adult - \$9.82

BST85Y - Youth - \$9.82

Upcharge for 2XL & Larger



## Contender NEW!

AS - A4XL; YS - YXL

- Z-75, light weight 100% polyester interlock jersey
- Self-material crew neck with back neck tape
- Classic athletic cut – ideal for screen printing
- Set in 1/4 length sleeves
- 2 needle hemmed straight bottom and sleeves

BST75 - Adult - \$7.16

BST75Y - Youth - \$7.16

Upcharge for 2XL & Larger



**SIZING GUIDE**  
**PAGE 192**

## Extra Innings

AS - A2XL; YS - YXL

- ▲ Z-Cloth, 100% cationic heather polyester, interlock fabric body and Z-Cloth, 100% polyester, interlock fabric sleeve have a silky smooth feel, is lightweight and snag resistant body and sleeve
- ▲ Body Inserts: Pro Air
- ▲ Crew neck with self-collar contrast color
- ▲ Front and back side mesh inserts - match body
- ▲ Contrast color ¾ length raglan sleeves
- ▲ Double needle hemmed sleeves and bottom

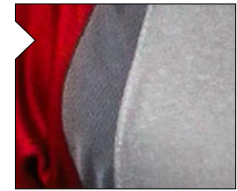
BS25A - Adult - \$22.80  
BS25Y - Youth - \$22.80



Upcharge for 2XL



GRY/BLK GRY/NVY GRY/ROY GRY/SCA



Pro Air Insert



## Complete Game

AS - A2XL; YS - YXL

- ▲ Z-75, light weight 100% polyester interlock jersey
- ▲ Body Inserts: Pro Air
- ▲ Crew neck with self-collar contrast color
- ▲ Front and Back side mesh inserts - match body
- ▲ Contrast color ¾ length raglan sleeves
- ▲ Double needle hemmed sleeves and bottom

BS24A - Adult - \$22.80  
BS24Y - Youth - \$22.80



Upcharge for 2XL



WHI/BLK WHI/FOR WHI/GLD WHI/MAR WHI/NVY WHI/ORG WHI/PUR WHI/ROY WHI/SCA WHI/BLK



Pro Air Insert



## Veteran

AS - A2XL; YS - YXL

LIMITED QTY

- ▲ C-FABRIC, 100% preshrunk cotton, is a lightweight, circular knit fabric
- ▲ Solid white body, contrast color knit crew neck with contrast taped neck
- ▲ Contrast color ¾ length raglan sleeves with double needle hem
- ▲ Split tail jersey, serge finish bottom

BS8A - Adult - \$15.20  
BS8Y - Youth - \$15.20

Upcharge for 2XL



WHI/GLD WHI/KEL WHI/TEA WHI/PUR WHI/ORG WHI/PNK YOUTH ONLY WHI/BLK  
WHI/NVY WHI/SCA WHI/ROY WHI/FOR WHI/MAR





## BASEBALL PANTS

# TRIPLE-CROWN BASEBALL PANTS ◀

Triple Crown pants offer outstanding features and are available in three cuts. Whether you're looking for traditional or contemporary, Triple Crown pants have you covered.

### TEK-KNIT / THE ULTIMATE BASEBALL PANT FABRIC

1 4-WAY STRETCH MOVES  
WITH YOUR BODY

2 HEAVY-DUTY  
ABRASION RESISTANCE

3 PRO-WEIGHT  
14 OZ. FABRIC



BP9U

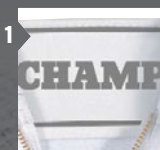
BP10

BP9



# BASEBALL PANTS

## TRIPLE-CROWN FEATURES



2 1/2" knit waistband with Super-Grip holds your jersey in



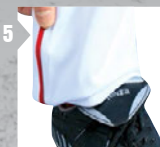
Brass YKK® zipper



Reinforced, cover-stitched seams



Double-ply, reinforced seat holds pockets in and smooths out rough slides. Two-ply, reinforced knees.



PERFECT INSEAM allows instant inseam adjustment to your inseam length (Only available on Triple Crown OB)



Embossed snaps

## Triple Crown Knicker

AS - A2XL; YXS - YXL

- TEK-KNIT, 100% polyester, is a highly abrasion resistant, 14 oz. pro-weight fabric that is constructed to allow four-way stretch
- Loose fit, knicker style pant with finished with an elastic leg openings
- Pro-style tunnel belt loops and two inset back pockets

BP10A - Adult - \$29.00

BP10Y - Youth - \$24.50

Upcharge for 2XL



## Triple Crown Classic NEW!

AS - A4XL; YXS - YXL

- TEK-KNIT, 100% polyester, is a highly abrasion resistant, 14 oz. pro-weight fabric that is constructed to allow four-way stretch
- Traditional style, ankle length pant finished with elastic leg openings
- Pro-style tunnel belt loops & two inset back pockets
- Contrasting color 3/16" braid on side (BP91 only)

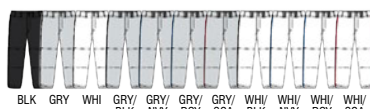
BP9A - Solid - Adult - \$29.50

BP9Y - Solid - Youth - \$25.00

BP91A - Braid - Adult - \$31.50

BP91Y - Braid - Youth - \$27.00

Upcharge for 2XL & Larger



## Triple Crown Pinstripe NEW!

AS - A3XL; YXS - YXL

- PRO-WARP, 100% polyester, is a highly abrasion resistant, 13 oz. pro-weight fabric that is constructed to allow two-way stretch
- Traditional style, ankle length pant finished with elastic leg openings
- Pro-style tunnel belt loops and two inset back pockets

BPPINA - Adult - \$32.00

BPPINY - Youth - \$27.50

Upcharge for 2XL & Larger



## Triple Crown OB NEW COLORS!

AS - A4XL; YXS - YXL

- TEK-KNIT, 100% polyester, is a highly abrasion resistant, 14 oz. pro-weight fabric that is constructed to allow four-way stretch
- Loose fit, straight leg, open-bottom pant
- PERFECT INSEAM allows instant inseam length adjustment that secures with Velcro
- Pro-style tunnel belt loops and two inset back pockets
- Contrasting color 3/16" braid on side (BP91U only)

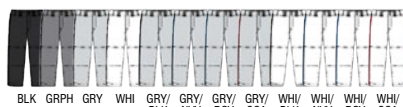
BP9UA - Solid - Adult - \$33.00

BP9UY - Solid - Youth - \$28.00

BP91UA - Braid - Adult - \$35.00

BP91UY - Braid - Youth - \$30.00

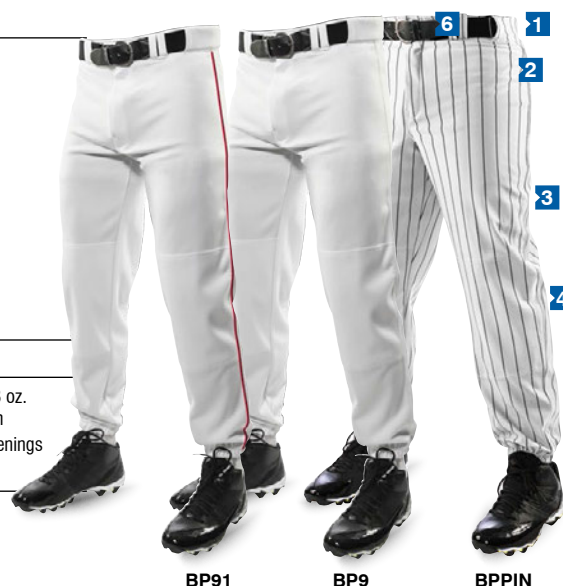
Upcharge for 2XL & Larger



PERFECT INSEAM



SCAN HERE!  
SEE HOW IT WORKS!





# BASEBALL PANTS



## MVP FEATURES



2" elastic waistband



Brass YKK® zipper



Cover-stitched side seams and double knee



Double snap closure

### MVP OB

AS - A4XL; YXS - YXL

- CLASSIC, 100% polyester, is a highly abrasion resistant, 12.5 oz. fabric that is constructed to allow four-way stretch
- Loose fit, straight leg, open-bottom pant
- Reinforced double knee
- Pro-style tunnel belt loops and two inset back pockets

BP4UA - Adult - \$30.40

BP4UY - Youth - \$25.40

Upcharge for 2XL & Larger



BLK GRY WHI

### MVP Classic

NEW! AVAILABLE DEC. 2015

AS - A4XL; YXS - YXL

- CLASSIC, 100% polyester, is a highly abrasion resistant, 12.5 oz. fabric that is constructed to allow four-way stretch
- Traditional style, ankle length pant finished with elastic leg openings
- Reinforced double knee
- Pro-style tunnel belt loops & one inset back pocket

BP4A - Adult - \$26.60

BP4Y - Youth - \$21.30

Upcharge for 2XL & Larger



BLK GRY WHI

**SAME GREAT FEATURES  
AS CLASSIC (BP3)  
WITH A NEW FIT!**

**SIZING GUIDE  
PAGE 192**



## Performer

AS - A2XL; YXXS - YXL

- CLASSIC, 100% polyester, is a highly abrasion resistant, 12.5 oz. fabric that is constructed to allow four-way stretch
- Traditional style pull-up pant with 2" draw-cord waistband is finished with elastic leg openings
- Reinforced, cover-stitched seams
- Mock-fly front
- Reinforced double knee
- One inset back pocket

BPA - Adult - \$23.50

BPY - Youth - \$15.80

Upcharge for 2XL



## Looper

YXS - YXL

- CLASSIC, 100% polyester, is a highly abrasion resistant, 12.5 oz. fabric that is constructed to allow four-way stretch
- Traditional style pull-up pant with 2" draw-cord waistband is finished with elastic leg openings
- Five belt loops
- Reinforced, cover-stitched seams
- Mock-fly front
- Reinforced double knee
- One inset back pocket

BP1Y - Youth - \$18.20



## Rookie

YXXS - YXL

- POLY STANDARD, 100% polyester, is an abrasion resistant, 11 oz. fabric that is constructed to allow four-way stretch
- Traditional style pull-up pant with 1.5" draw-cord waistband is finished with elastic leg openings
- Reinforced, cover-stitched seams
- Reinforced double knee
- One patch back pocket

BPVY - Youth - \$14.30





# BASEBALL SOCKS

BASEBALL

UNPIRE

SOFTBALL

BAGS

FOOTBALL

BASKETBALL

SOCCER

TRAINING

SPORTSWEAR

VOLLEYBALL

LACROSSE

OFFICIALS

PHYSICAL ED.

Double cuff

Extra-long athletic cut

85% polyester/15% elastene

Professionally tailored heel

Double rib top

Reinforced, tailored toe

Tube style sock

100% polyester

## Pro **NEW!**

- Engineered knitted heel and toe
- Perfect for any sport
- 85% Polyester/15%Elastane
- Sizes: S, M, L
- Available in pairs and dozens

AS1 - Pair - \$5.57/PR

AS1-DZ - Dozen - \$63.68/DZ (\$5.31/PR)



Sizing Chart					
	Sock Size	Girls'	Boys'	Women's	Men's
S	6-8	13-6	9-4	4-6	n/a
M	9-11	6-9	4-9	6-9	4.5-9
L	10-13	n/a	n/a	10-13	9-12

## Multi-Sport **NEW!**

- Tube Style Sock
- Perfect for any sport
- 100% Polyester
- Sizes: XS, S, M, L
- Available in pairs and dozens

AS2 - Pair - \$3.87/PR

AS2-DZ - Dozen - \$43.20/DZ (\$3.60/PR)



Sizing Chart						
	Sock Size	Girls'	Boys'	Women's	Men's	Tube Length
XS	3-5	7-13	n/a	n/a	S	14-16
S	6-8	13-6	9-4	4-6	n/a	19-20
M	9-11	6-9	4-9	6-9	4.5-9	23-34
L	10-13	n/a	n/a	10-13	9-12	29-30



Cup Included  
For BPS12AC  
& BPS12YC

BLK

GRY

WHI

## On Deck Sliding Short **NEW!**

AS - A2XL; YS - YL

- 86% Polyester/14% Spandex fabric
- Contour fit construction
- Ergonomic side panel padding for bruise protection
- Mesh ventilated for optimum comfort
- Jacquard elastic waistband
- Cup is included in retail clam shell only (BPS12AC & BPS12YC)

BPS12A - Without Cup - Adult - \$25.00  
BPS12Y - Without Cup - Youth - \$25.00  
BPS12AC - With Cup - White Only - Adult - \$26.00  
BPS12YC - With Cup - White Only - Youth - \$26.00  
Upcharge for 2XL



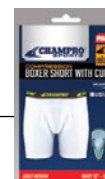
Cup Included

## Compression Boxer Short with Cup **NEW!**

AS - AXL; YS - YL

- 86% Polyester/14% Spandex fabric
- Contour fit construction
- Jacquard elastic waistband
- Cup is included

BPS14AC - Adult - \$19.99  
BPS14YC - Youth - \$19.99



HARD CUP

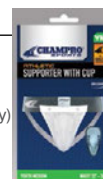


SOFT CUP

## Athletic Supporter

- Elastic waist strap

A5 - (S-L) - Supporter & hard cup - Adult - \$9.50  
A5Y - (M, L) - Supporter & hard cup - Youth - \$9.40  
A51 - (S-L) - Supporter & soft cup - Adult - \$9.00 (Limited Quantity)  
A51Y - (M, L) - Supporter & soft cup - Youth - \$9.00 (Limited Quantity)



HARD CUP



SOFT CUP

## Banana Style Hard & Soft Cup

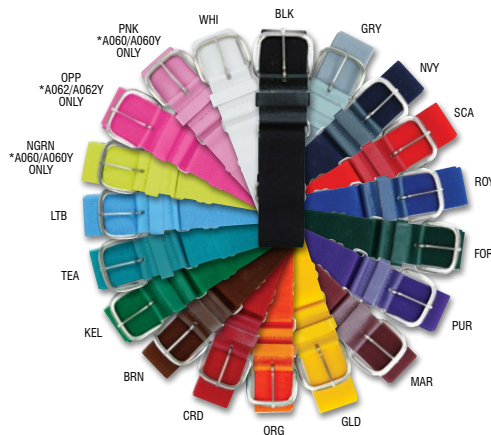
- Sizes: Adult & Youth

A6C - Hard cup - Adult - \$3.50  
A6YC - Hard cup - Youth - \$3.50  
A61C - Soft cup - Adult - \$3.50 (Limited Quantity)  
A61YC - Soft cup - Youth - \$3.50 (Limited Quantity)

## Baseball Belt

- Adjustable baseball belt
- Adult adjusts from 24" to 48"
- Youth adjusts from 18" to 34"
- Includes retail packaging

A060 - 1.5" Wide leather tab - Adult - \$4.80/EA  
A060Y - 1.25" Wide leather tab - Youth - \$4.80/EA  
A062 - 1.5" Wide synthetic tab - Adult - \$4.50/EA  
A062Y - 1.25" Wide synthetic tab - Youth - \$4.50/EA





## NEW EXTREME SOFTBALL UNIFORMS

### Circuit **NEW! AVAILABLE DEC. 2015**

WXS - W2XL; GS - GL

- ▶ ACTIVE CLOTH, 100% polyester mid-weight jersey with "PIN-DOT" mesh 100% polyester
- ▶ Printed "digi-camo design" shoulder inserts
- ▶ Set in sleeves with double needle hem
- ▶ 5 button front spaced for lettering
- ▶ Straight double needle hemmed bottom

BS23W - \$17.00  
Upcharge for 2XL

**W**  
WOMEN'S  
CUT

**DRI-GEAR**  
PERFORMANCE



BLK/GRY/BLK CAMO  
GRPH/FUS/BLK CAMO  
GRY/OPY/NAVY CAMO  
ROY/ROY/BLK CAMO  
SCA/SCA/BLK CAMO

### Leadoff **NEW! AVAILABLE DEC. 2015**

WXS - W2XL; GS - GXL

- ▶ Traditional style, low-rise pant finished with tapered leg pattern and elastic leg openings
- ▶ TEK-KNIT, 100% polyester, is a highly abrasion resistant, 14 oz. pro-weight fabric that is constructed to allow four-way stretch
- ▶ Printed "digi-camo design" side insert
- ▶ 2 1/2" knit digi-camo waistband with Super-Grip holds your jersey in
- ▶ Professional tailoring features include reinforced, coverstitched seams, two inset back pockets, and a Brass YKK® zipper
- ▶ Pro-style tunnel belt loops and "X'd style" front belt loops
- ▶ Reinforced double knee to maximize comfort

BP23W - \$28.50  
Upcharge for 2XL

**W**  
WOMEN'S  
CUT



BLK/GRY/BLK CAMO  
GRPH/FUS/BLK CAMO  
GRY/OPY/NAVY CAMO  
ROY/ROY/BLK CAMO  
SCA/SCA/BLK CAMO

### TEK-KNIT / THE ULTIMATE BASEBALL PANT FABRIC

- |   |                                     |                               |
|---|-------------------------------------|-------------------------------|
| 1 4-WAY STRETCH MOVES<br>WITH YOUR BODY | 2 HEAVY-DUTY<br>ABRASION RESISTANCE | 3 PRO-WEIGHT<br>14 OZ. FABRIC |
|---|-------------------------------------|-------------------------------|



Knit Digi-Camo Waistband





# STOCK UNIFORMS WITH A CUSTOM LOOK ◀

## At Bat NEW! AVAILABLE DEC. 2015

WXS - W2XL; GS - GL

- ▲ ACTIVE CLOTH, 100% polyester mid-weight jersey with "PIN-DOT" mesh 100% polyester
- ▲ Printed "digi-camo design" shoulder inserts.
- ▲ "ACTIVE CUT" Softball Jersey
- ▲ Racerback with double needle hem arm holes
- ▲ Mitered V-neck collar
- ▲ Straight double needle hemmed bottom

BS20W - \$12.00  
Upcharge for 2XL





# SOFTBALL JERSEYS

BASEBALL  
UNPIPE  
SOFTBALL  
BAGS  
FOOTBALL  
BASKETBALL  
SOCCER  
TRAINING  
SPORTSWEAR  
VOLLEYBALL  
LACROSSE  
OFFICIALS  
PHYSICAL ED.



Back



## Diamond

WS - W2XL, GS - GL

- ACTIVE CLOTH, 100% Polyester mid-weight jersey with "PIN-DOT" mesh 100% polyester
- Contrasting color mesh side and shoulder inserts
- Sleeveless jersey
- 2 button placket with self material neck trim
- Double needle hemmed bottom and armholes

BS37W - Women - \$22.00

BS37G - Girls - \$22.00

Upcharge for 2XL



BLK/WHI FUS/WHI GRY/BLK LIM/WHI NAVY/WHI PUR/WHI ROY/WHI SCA/WHI WHI/BLK

## Racer

WS - W2XL; GS - GL

- POWER, 100% polyester, flat back mesh is a mid-weight jersey fabric with a smooth side and a slightly textured side
- Modified Racerback pattern
- Double needle hemmed bottom
- Contrast color side insert, arm hole trim and piping
- 2 color - Self collar V-neck

BS17W - Women - \$21.30

BS17G - Girls - \$21.30

Upcharge for 2XL



BLK/WHI FOR/WHI GLD/WHI GRY/BLK MAR/WHI OPY/WHI NAVY/WHI PUR/WHI ROY/WHI SCA/WHI WHI/GRY

**SIZING GUIDE**  
**PAGE 192**



## Natural

WS - W2XL; GS - GL

- ▲ POWER, 100% polyester, flat back mesh is a mid-weight jersey fabric with a smooth side and a slightly textured side
- ▲ Sleeveless jersey
- ▲ Double needle hemmed bottom
- ▲ Two button placket
- ▲ Contrast color side insert and arm hole trim
- ▲ Self material collar trim

BS27W - Women - \$19.40  
BS27G - Girls - \$19.40  
Upcharge for 2XL



## Spike

WXS - W2XL

- ▲ ACTIVE CLOTH 100% Polyester mid-weight jersey with "PIN-DOT" mesh 100% polyester inserts
- ▲ Contrasting color curved front/back insert
- ▲ Cap raglan sleeve
- ▲ Specifically cut for women
- ▲ Double needle hemmed sleeve & bottom
- ▲ Over lapped v-neck

VJ13A - Women - \$22.00  
Upcharge for 2XL



BLK/WHI NAVY/WHI ROY/WHI SCA/WHI WHI

## Star **NEW!**

WXS - W2XL

- ▲ Impact 85, premium weight 100% polyester interlock jersey
- ▲ Self-material overlap V-neck with back neck tape
- ▲ Short cap sleeves
- ▲ Double needle hemmed straight bottom and sleeves
- ▲ Athletic cut and grade

BST21W - Women - \$22.00  
Upcharge for 2XL



BLK CHA FOR GLD LTB MAR NAVY



ORG PNK PUR ROY SCA WHI



# SOFTBALL PANTS

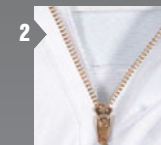
BASEBALL  
UMPIRE  
SOFTBALL  
BAGS  
FOOTBALL  
BASKETBALL  
SOCCER  
TRAINING  
SPORTSWEAR  
VOLLEYBALL  
LACROSSE  
OFFICIALS  
PHYSICAL ED.



## FEATURES



2 1/2" knit waistband with Super-Grip holds your jersey in



Brass YKK® zipper



Cover-stitched side seams and double knee

### Tournament NEW! AVAILABLE DEC. 2015

WS - W2XL; GS - GXL

- Traditional style, low-rise pant finished with tapered leg pattern and elastic leg openings
- TEK-KNIT, 100% polyester, is a highly abrasion resistant, 14 oz. pro-weight fabric that is constructed to allow four-way stretch
- Pro-style tunnel belt loops & two inset back pockets
- Contrasting color 3/16" braid (BP11P only)

BP11A - Solid - Women - \$25.50  
BP11Y - Solid - Girls - \$24.00  
BP11PA - Braid - Women - \$27.00  
BP11PY - Braid - Girls - \$25.50  
Upcharge for 2XL



BLK GRP GRY NRV WHI



BLK/ PNK BLK/ ROY BLK/ SCA WHI/ BLK GRY/ BLK GRY/ NRV GRY/ ROY GRY/ SCA WHI/ BLK WHI/ NRV WHI/ ROY WHI/ SCA

### Chopper NEW! AVAILABLE DEC. 2015

WS - W2XL; GS - GXL

- Traditional style, low-rise pant finished with tapered leg pattern and open bottom leg openings
- TEK-KNIT, 100% polyester, is a highly abrasion resistant, 14 oz. pro-weight fabric that is constructed to allow four-way stretch
- Pro-style tunnel belt loops & two inset back pockets

BP11UA - Women - \$26.00  
BP11UY - Girls - \$24.50  
Upcharge for 2XL



BLK GRP NRV WHI

## TEK-KNIT / THE ULTIMATE SOFTBALL PANT FABRIC

- 1 4-WAY STRETCH MOVES WITH YOUR BODY
- 2 HEAVY-DUTY ABRASION RESISTANCE
- 3 PRO-WEIGHT 14 OZ. FABRIC

**SIZING GUIDE**  
PAGE 192



## League

WS - W2XL; GXS - GXL

- Low-rise pant with zipper front, elastic waistband with drawcord and finished with elastic leg openings
- CLASSIC, 100% polyester, is a highly abrasion resistant, 12.5 oz. fabric
- Professional tailoring features include reinforced, coverstitched seams and a Brass YKK® zipper
- Reinforced, coverstitched seams
- Reinforced double knee

BP8A - Women - \$28.10  
BP8Y - Girls - \$25.90  
Upcharge for 2XL



BLK GRY WHI



## SLIDING SHORTS

# PROTECTION MEETS STYLE

## Line Drive

WXS - W2XL

- 86% Polyester/14% Spandex fabric
- Trim, low profile fit with side panel padding for bruise protection
- Mesh ventilated tummy and crotch
- Jacquard elastic waistband for optimum comfort

BPS11A - Women - \$28.50  
Upcharge for 2XL



WOMEN'S CUT 4-WAY STRETCH



BLK

OPY

PNK

WHI



## FEATURES



Integrated side panel padding



Mesh ventilation



Comfort waistband

# FAST PITCH SOFTBALLS

- CHAMPRO manufactures a complete range of softballs to ensure that we have a ball that meets the durability and performance standards required by any league and any budget.
- CHAMPRO's high performance polyurethane and cork cores are pressure molded to the highest durability standards and adhere to prescribed performance metrics that your league requires.
- CHAMPRO Sports' softball covers offer the optimum combination of feel and durability.

- CHAMPRO leather and durahide covers both offer the best, longest lasting grip in the field.
- CHAMPRO fast pitch softballs feature our raised "High M" seam with the feel that players prefer.
- CHAMPRO's combination of high performance cores, sure-tack covers and "High M" seam make CHAMPRO softballs the best in the field.



## Tournament Fast Pitch

- Solid polyurethane core
- Optic yellow leather cover
- .47 COR, 375 compression
- Raised seam, red stitch



**NFHS** Little League.

CSB12 - 12" ASA - \$110.00/DZ  
CSB13 - 11" ASA - \$110.00/DZ  
CSB5LYN - 12" NFHS - \$110.00/DZ  
CSB22 - 12" Little League - \$110.00/DZ



## Game Fast Pitch

- Solid polyurethane core
- Optic yellow durahide cover
- .47 COR, 375 compression
- Raised seam, red stitch



**NFHS** Little League.

CSB8 - 12" ASA - \$79.20/DZ  
CSB7 - 11" ASA - \$79.20/DZ  
CSB5DYN - 12" NFHS - \$79.20/DZ  
CSB28 - 12" Little League - \$79.20/DZ



## Tournament USSSA Fast Pitch Classic

- Solid polyurethane core
- Optic yellow leather cover
- .47 COR, 375 compression
- Raised seam, blue stitch



CSB42 - 12" - \$110.00/DZ  
CSB41 - 11" - \$110.00/DZ



## Game USSSA Fast Pitch Classic

- Solid polyurethane core
- Optic yellow durahide cover
- .47 COR, 375 compression
- Raised seam, blue stitch



CSB44 - 12" - \$79.20/DZ  
CSB43 - 11" - \$79.20/DZ



## Game Fast Pitch

- Solid polyurethane core
- Optic yellow durahide cover
- .44 COR, 375 compression
- Raised seam, red stitch



CSB18 - 12" - \$79.20/DZ  
CSB17 - 11" - \$79.20/DZ



## Recreation Fast Pitch

- Practice core
- Optic yellow durahide cover
- Raised seam, red stitch
- Perfect for outdoor practice

CSB65 - 12" - \$59.99/DZ  
CSB66 - 11" - \$59.99/DZ